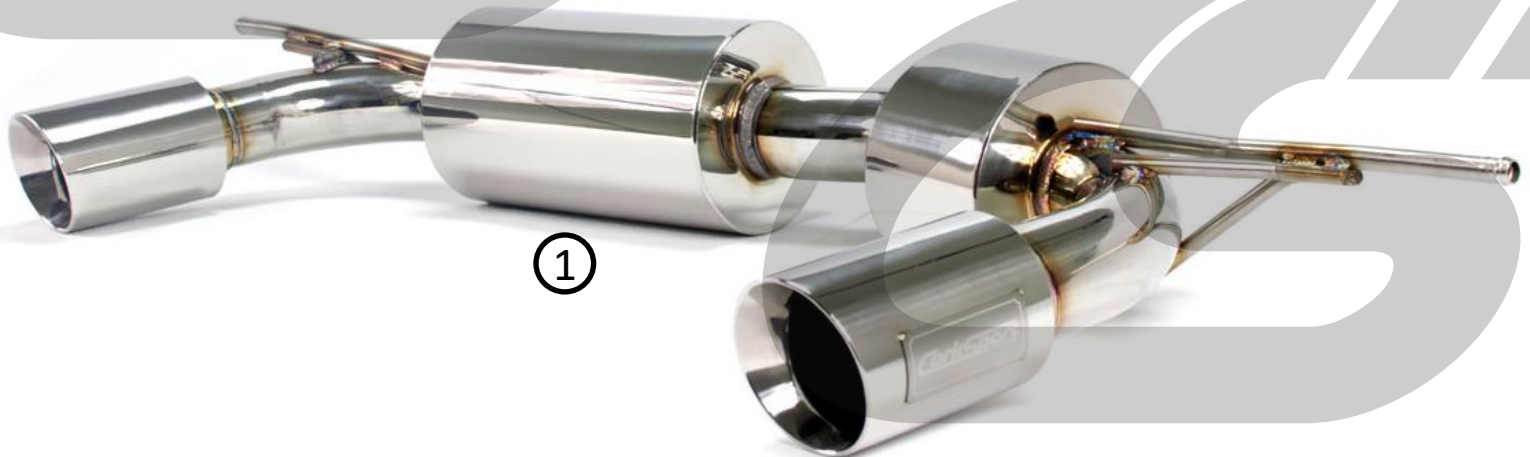


CorkSport Mazda CX-3 Axle Back Exhaust

2016+ Mazda CX-3 AWD



①



②

This package should contain:

1. One (1) CorkSport Axle Back Section for CX-3 AWD
2. Exhaust and Gasket Bolt Kit
 - One (1) 60mm Exhaust Gasket
 - Two (2) M10x1.25x35mm Bolts
 - Two (2) M10x1.25 Nuts
 - Two (2) M10 Lock Washers
 - Four (4) M10 Flat Washers

CorkSport CX-3 Axle Back Exhaust

2016+ Mazda CX-3 AWD



Thank you for purchasing the CorkSport Axle Back Exhaust for the 2016+ Mazda CX-3. Liven up your CX-3 with a great exhaust note that is subtle enough to drive day to day. The 60.5mm T-304 stainless steel piping and high flow resonators provide a boost to exhaust flow while looking good at the same time. Dual 90mm tips fit perfectly in the bumper cutouts to compliment the great looks of the Mazda CX-3. Please let us know what you think by submitting a review at:

<https://corksport.com/2016-mazda-cx3-awd-axle-back-exhaust.html>

Pre-Installation Notes:



Make sure your vehicle is completely cooled down prior to starting installation. If you are going to work on your car within an hour or two of having driven it, use a fan to cool off the car.



These instructions were written for reference only and the use of a factory service manual is recommended. Please read these instructions thoroughly prior to starting installation.



These installation instructions were written using a 2018 Mazda CX-3 AWD. Installation for earlier Mazda CX-3 AWD will be similar.

Materials and Time:



General Info.

Part #: CX3-6-100-10

Time Est: 1 hour

Wrench Rating: 2/5



Tooling List

14mm Socket

17mm Socket

14mm End Wrench

17mm End Wrench

3/8" Drive Ratchet

6" Extension

WD-40

Jack Stands

Floor Jack

Torque Wrench

Channel Lock Pliers



Parts List

-One (1) CorkSport Axle Back Section for CX-3

-Exhaust and Gasket Bolt Kit

One (1) 60mm Exhaust Gasket

Four (4) M10x1.25x35mm Bolts

Four (4) M10x1.25 Nuts

Four (4) M10 Lock Washers

Eight (8) M10 Flat Washers

Need Help With Your Installation?

Call (360) 260-CORK

Order of Operations & Table of Contents

Follow the order of operations listed below for your purchased exhaust system.



OEM Axle Back Removal

Section 1: Support the car on floor Jack/Jackstands or Lift

Pg. 2

Section 2: Removing the OEM Axle Back Assembly

Pg. 3



CorkSport Axle Back Installation

Section 3: Installing CorkSport Axle Back

Pg. 5-7

Detailed Instructions

1. Support the Car on Floor Jack/Jackstands or Lift

- a) Use a floor jack and jackstands to gain access to the underside of the vehicle. You will need to access the axle back exhaust section. Shown in **Figure 1a**.



Always refer to the floor jack and jackstand manufacturers instructions as well as the factory owners manual for your vehicle to determine jacking points and support points. Alternately, use an automotive lift to gain access to the underside of the vehicle. Redundant support mechanisms are recommended.

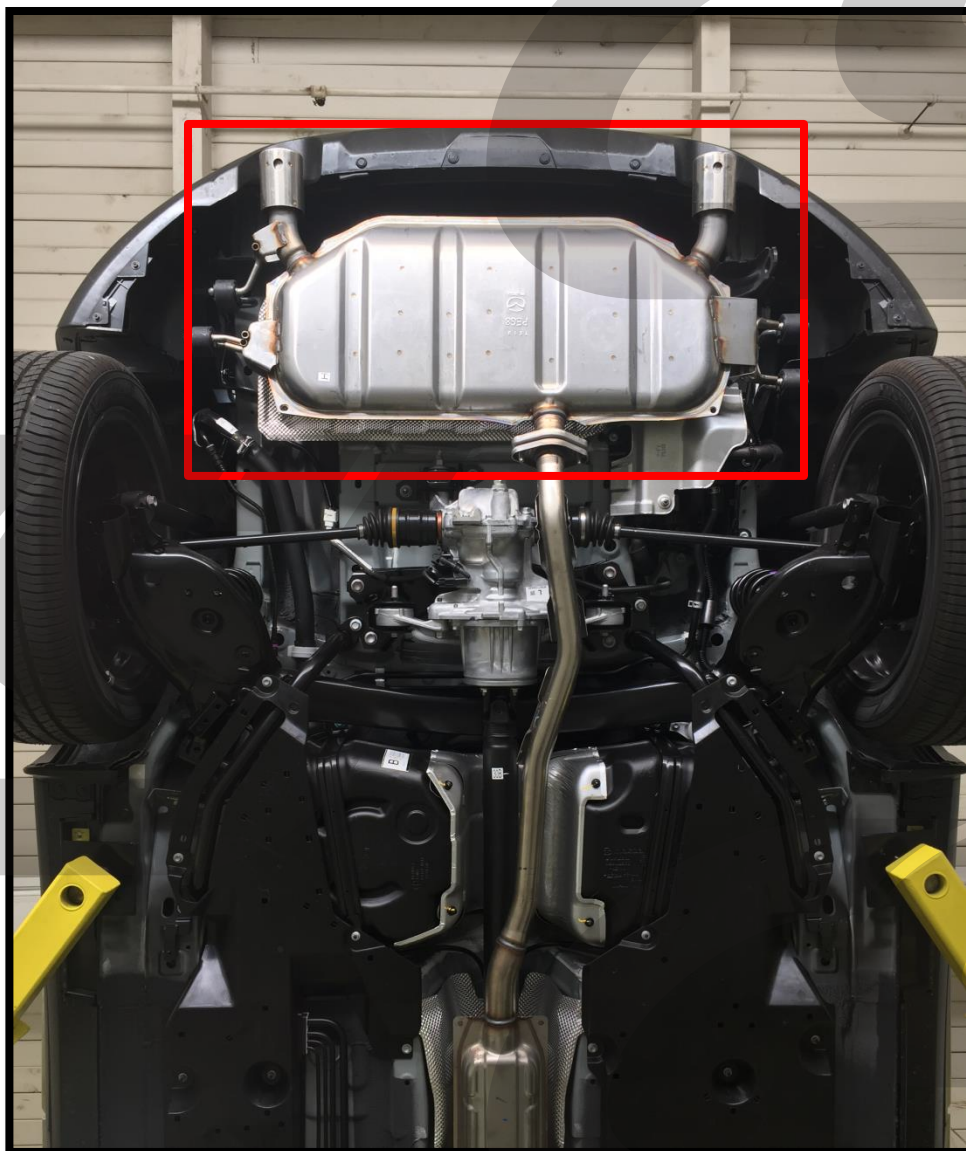


Figure 1a

2. Remove the OEM Axle Back Assembly

- a) Using a 14mm socket and extension if desired, remove the two nuts holding the factory axle back to the mid pipe (bolts circled in **Figure 2a**).
- b) Remove the exhaust from the four rubber exhaust hangers located on either side of the muffler (shown in **Figure 2b**). Start with one side and remove the exhaust hanger from the rubber hanger. The exhaust will be supported by the other hangers on the opposite side. While supporting the center of the muffler, remove the last two exhaust hangers from the rubber hangers.

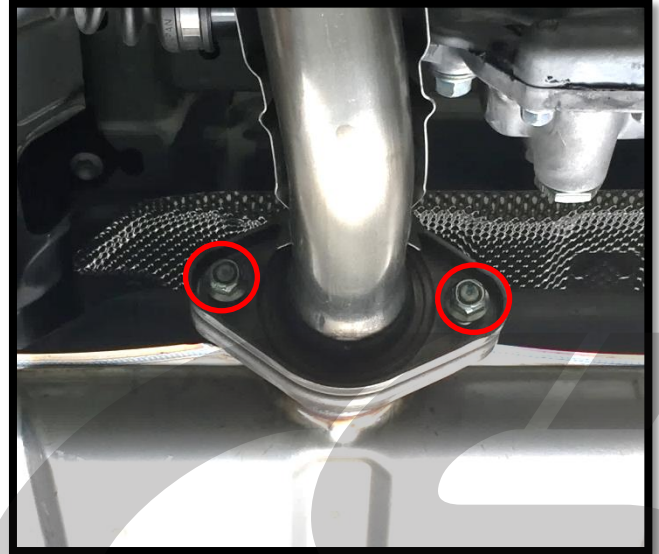


Figure 2a



Support the axle back as you remove it from the car to keep it from falling to the ground. The easiest way is to get a friend to help you or use a floor jack.

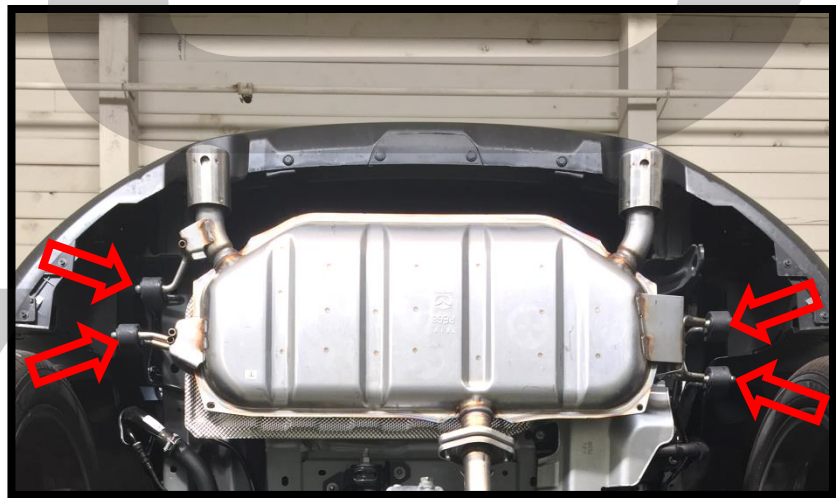


Figure 2b



Spray cleaner or silicone spray and channel lock pliers can assist in the removal of the exhaust hangers from the rubber hangers. Spray the exhaust hanger with WD40 then clamp the pliers on the rubber hanger on one side and the end of the exhaust hanger on the other (see **Figure 2c**). Be careful not to squeeze too hard as you can damage the rubber hangers.

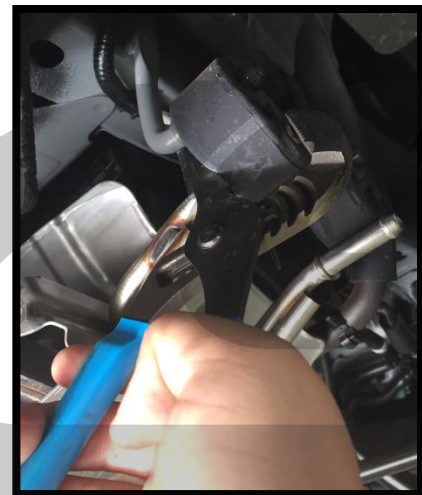


Figure 2c

3. Install the CorkSport Axle Back

- a) **Install the CorkSport axle back exhaust.** Place the two exhaust hangers into the two (2) rearmost stock rubber exhaust hangers and position the exhaust into place (red arrows in Figure 3a).



The two (2) forward factory rubber hangers are not used. They may be left in place.

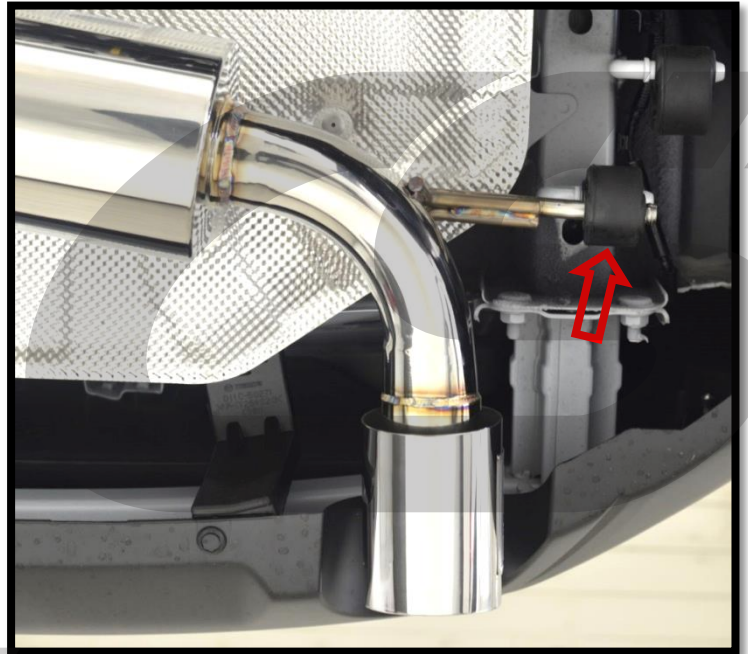
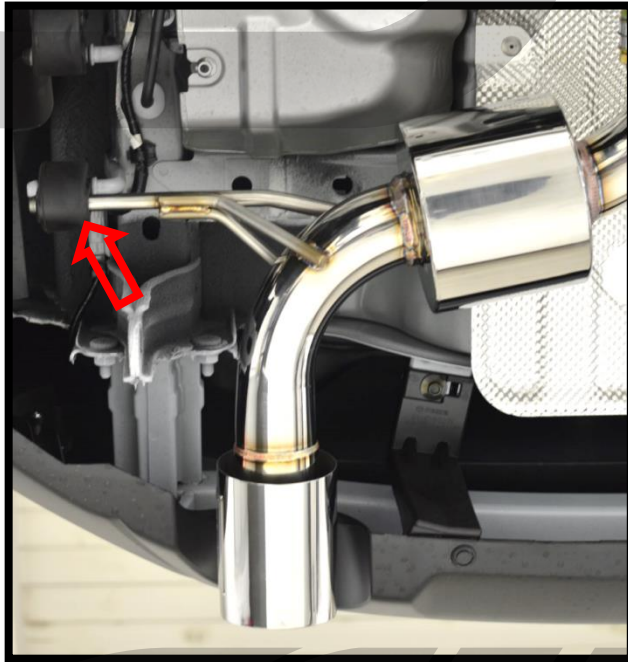


Figure 3a

- b) **Using the supplied gasket & hardware attach the CS axle back to the OEM Midpipe.** (Figure 3b). Only hand tighten for now.



Do not forget to use provided gasket. Hardware is installed in the order: bolt, washer, exhaust flange, gasket, exhaust flange, second washer, lock washer, then finally the nut (shown in Figure 3c on next page)



Figure 3b

3. Install the CorkSport Axle Back Exhaust (continued)

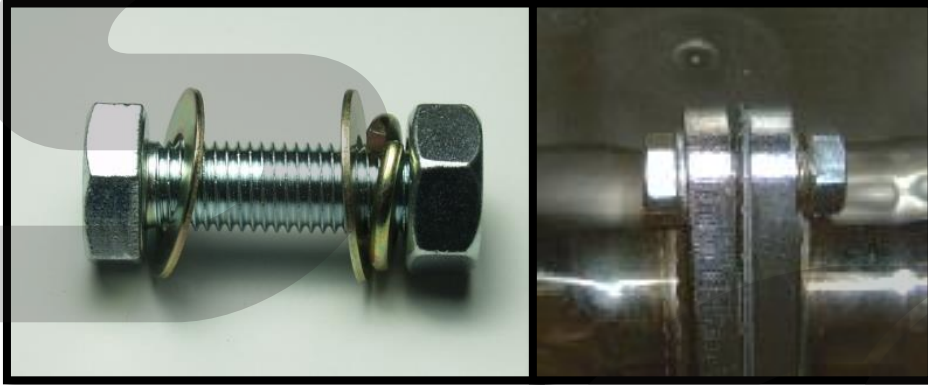


Figure 3c

- c) **Align the exhaust tips and hangers so the exhaust is straight and centered.** Figure 3d shows how the exhaust tips should look when properly aligned.



The tips of the exhaust should fit evenly within the arched exhaust cut outs in the bumper and should not rub the under body heat shields or sub frame.

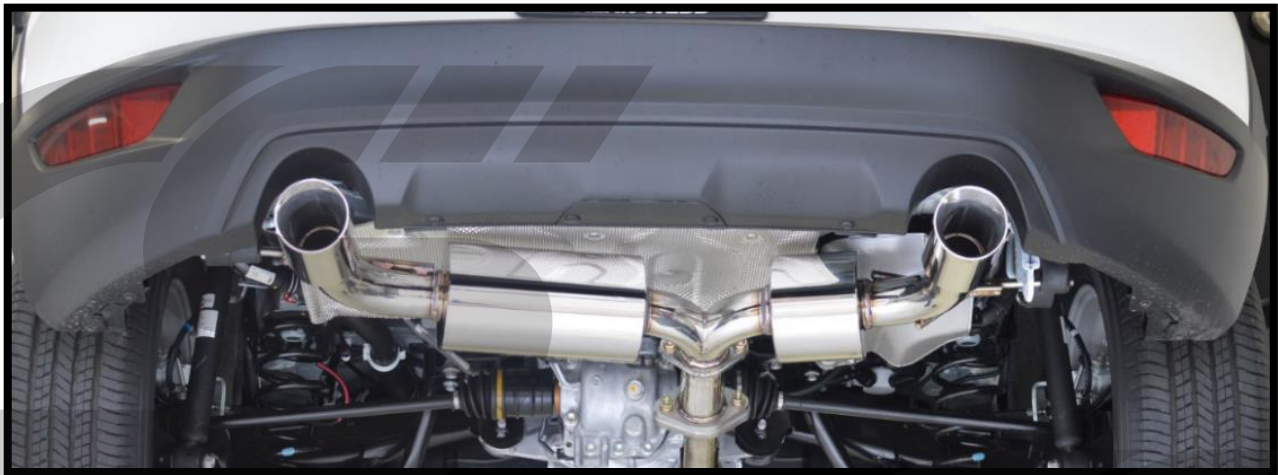


Figure 3d



Misalignment of the axle back muffler section could result in melting the exhaust cut out sections of the bumper cover. Make sure there is about a one inch gap between the exhaust tip and the bumper.

- d) **Tighten all hardware to 35-40 ft-lbs** with a 17mm socket and end wrench.
- e) **Double check tip position for clearance.**



This completes the installation of your CorkSport Axle Back Exhaust. Bring the car down off the jack stands and start the car. Use a flashlight to check under the car to ensure that you do not see any visible exhaust fumes and listen for leaks (usually a whispering tick sound at the flange). If there are leaks, 99% of the time a flange has been over tightened or is misaligned. There may be a burning off smell as the exhaust is heated for the first time. This smell will go away after some driving.

What's Next:

CorkSport Power Series Short Ram Intake for 2.0L

One of the easiest and most beneficial performance enhancements you can do for your vehicle, the CorkSport Power Series Short Ram Intake replaces your factory airbox with an open intake system allowing more air into the intake chamber. Engineered with exacting tolerances, the CorkSport SkyActiv Short Ram Intake includes our precision machined MAF housing made from billet aluminum, a durable dry flow air filter and custom reinforced silicone connector.



CorkSport CX-3 Lowering Springs

It's time to get rid of the excessive wheel gap on your 2016+ CX-3 with CorkSport Lowering Springs. You get the best of both worlds with an aggressive look, and a better center of gravity for improved handling while keeping the OEM ride quality.

