

CorkSport Front Strut Tower Bar

2010+ Mazda 2



Thank you for purchasing the CorkSport Mazda 2 Front Strut Tower Bar. Adding this bar will strengthen your Mazda to make the chassis more rigid by reducing flex. The net result of this brace is an increase in cornering ability and more feedback from your cars suspension. This brace easily installs to factory mounting points with six bolts making installation a breeze. We hope you enjoy your new CorkSport part and welcome your feedback! <http://www.corksport.com/corksport-mazda-2-front-strut-tower-brace.html>

Pre-Installation Notes:



Make sure your vehicle is completely cooled down prior to starting installation. If you are going to work on your car within an hour or two of having driven it, use a fan to cool off the car.



These instructions were written for reference only and the use of a factory service manual is recommended. Please read these instructions thoroughly prior to starting installation



These installation instructions were written using a 2011 Mazda 2. Other year Mazda 2 models will be similar.

Materials and Time:



General Info.

Part #: Mz2-3-020
Time Est: 0.5 hours
Wrench Rating: 1/5



Tooling List

10mm Socket
14mm Socket
3/8" Drive Ratchet



Parts List

One (1) CorkSport Front Strut Tower Bar

Need Help With Your Installation?
Call (360) 260-CORK



Detailed Instructions

 These installation instructions were written using a 2011 Mazda 2. Other year Mazda 2 models will be similar.

1. Install the Front Strut Tower Bar

- a) Remove the 10mm nut holding the AC line (shown circled in Blue in Figure 1a). You will put the strut tower bar under this in a later step.
- b) Remove the two 10mm nuts holding the brake master cylinder reservoir (shown circled in blue in figure 1b).
- c) Remove the six 14mm nuts from the shock towers. Figure 1a shows the 3 passenger side nuts. There will be 3 similar nuts on the drivers side.
- d) Place the strut tower bar on the shock towers and reinstall the 14mm nuts. Also make sure the 6mm Allen head bolts are tight (Figure 1c shows the driver side installed).

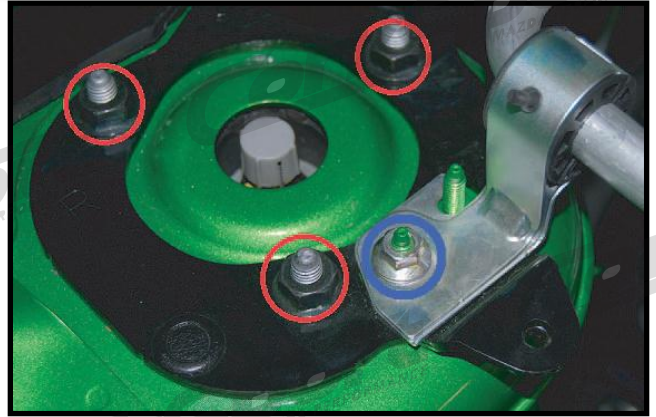


Figure 1a

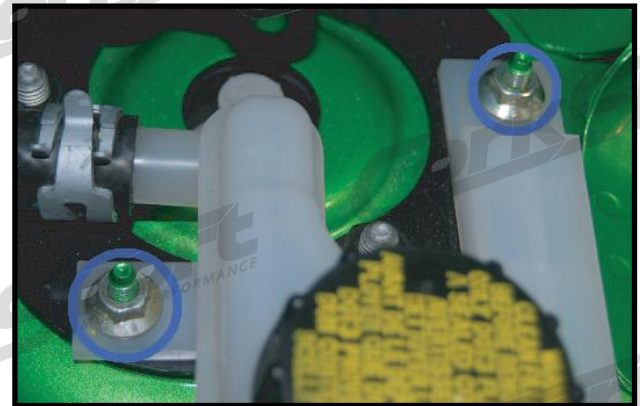


Figure 1b



Figure 1c



Figure 1d

- e) Reinstall the brake master cylinder reservoir (shown Figure 1d).
- f) Reinstall the AC line bracket removed in step 1.



 This completes the installation of your CorkSport Front Strut Tower Bar. Check out our [knowledgebase](#) for additional install information

Need Help With Your Installation?
Call (360) 260-CORK

What's Next:

[CorkSport Mazda 2 Rear Torsion Bar](#)



Our **CorkSport Rear Torsion Bar** was designed in 3D CAD software and optimized for strength and weight using FEA analysis. The brace was then thoroughly tested on the Mazda 2 to provide added roll resistance in the rear of the vehicle. With such a short wheel base, the 2 can lift a rear wheel during hard cornering. The rear torsion bar will help reduce wheel lift and result in quicker cornering and decreased understeer.

[CorkSport Mazda 2 Front Sway Bar](#)

Reduce body roll during cornering and get a crisper road feel with the CorkSport 2011+ Mazda 2 Front Sway Bar. By strengthening the lower suspension connection across the front of the Mazda 2, the CorkSport Mazda 2 Front Sway Bar is able to reduce oversteer or understeer by complimenting other suspension upgrades on your Mazda 2 and reduces body lean which keeps the outside tire in better contact with the ground in turns.



[H&R Sport Lowering Springs](#)



H&R Special Springs are high quality products. They will not set or sag, and are designed and manufactured to be strong, resilient, and more durable than other automotive coil springs. All H&R springs are crafted from a special (hf) 54SiCr6 spring steel to ensure premium quality and performance. They shot-peen our springs to increase their life by more than 200%. All production is completed in-house so they can ensure the quality of their products. Each spring is 100% tested before leaving our ISO9001 certified production facility in Germany.